



Flap Barrier F06

OVERVIEW

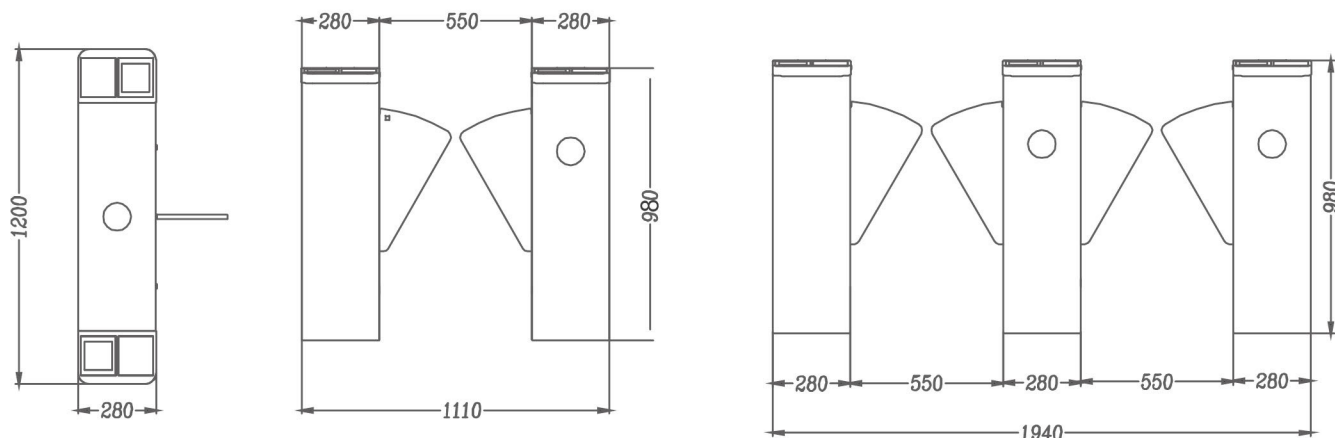
Flap barriers have two flaps on either side that serve as physical barriers, limiting pedestrian access into a venue. The housing material and lightweight cabinet shape makes SecuGo flap barriers security turnstiles suitable for a large variety of facilities.

With photoelectric sensors in the passageway, SecuGo flap barriers reliably detect persons and objects. They enable non-contact passage and raise the alarm on unauthorized use of the gate.

The barriers turn green when the lane is ready for use and red when the barriers are closing or an alarm has been triggered: The visitor immediately recognizes whether to enter the lane or wait for assistance.

KEY FEATURES

- Premium materials (SUS304, 1.5mm thickness)
- Support 100% duty cycle
- Support non-contact pass through
- Flexible to mount different readers
- Easy installation



TECHNICAL DATA

Housing dimension 1200*280*980 mm

Passage width 550 mm

Throughput rate 35 p/m

MCBF 5,000,000

Power supply 100~240 Vac, 50/60 Hz

Operational voltage 24 Vdc

Max power consumption 35 W

Communication interface RS485, Dry contact

Working temperature -25 to +70 °C

Gross weight 68 kg(single core unit), 93 kg (double core unit)

Hanwang Technology Co., Ltd

Address: Hanvon Tower, ZhongGuanCun, Software Park, Beijing, China, Postcode: 100193

Tel: +86-10-82786682 Fax: +86-10-82786862

Email: facego_inquiry@hanwang.com.cn Http: //www.hanvon.com

Specification subject to change without notice in advance. Copyright© Hanwang Technology Co.,Ltd All rights reserved. The trademarks identified herein are the trademarks of or registered trademarks of Hanwang Technology Co.,Ltd or other third party.